



In this far-flung corner of Downeast Maine, salt air and a slow pace rejuvenate the soul. People live in rhythm with the shifting of the tides, the migration of the fish, the rising of the sun, the turning of the leaf, and the warming of the soil. Active fishing villages, working-forests, family farms, and prolific blueberry barriers reflect this relationship as people continue to harvest the seasonal bounty of land and sea, much as their ancestors have done for centuries. Visitors are invited to experience the gentle pull of this magical landscape, to create memories with their local hosts and newfound friends, to connect with the simple joys and strengthening challenges of life in the Bold Coast region. Here you'll discover the Bold Coast gateway communities of Steuben, Milbridge, Cherryfield, Harrington, Addison, Columbia and Columbia Falls. These communities are your home - active fishing harbor situated at the mouth of the Narraguagus River and offers opportunities to sample fresh, local seafood and enjoy wildlife watching boat tours. Visitors can learn about the town's extensive shipbuilding and maritime heritage at the Milbridge Historical Society and museum.

Just a short drive from downtown Milbridge is McClellan Park, Breathing scenery and numerous opportunities for pad-dling, fishing, wildlife-viewing, hiking, camping, and swimming. Steuben, Milbridge, Cherryfield, Harrington, Addison, Columbia and Columbia Falls. These communities are your home - active fishing harbor situated at the mouth of the Narraguagus River and offers opportunities to sample fresh, local seafood and enjoy wildlife watching boat tours. Visitors can learn about the town's extensive shipbuilding and maritime heritage at the Milbridge Historical Society and museum.



Milbridge

Milbridge marks the beginning of the Bold Coast Scenic Byway, a 1.25-mile scenic drive passing through over 20 coastal communities. Stop in at our regional visitor center, located at the Schooner Gallery, to learn more about the greater region. Downtown Milbridge is easily walkable and contains many historic 19th century homes including that of blueberry baron Jasper Wyman. Milbridge is the home of a family owned and operated Christmas wreath company, has an active fishing harbor situated at the mouth of the Narraguagus River and offers opportunities to sample fresh, local seafood and enjoy wildlife watching boat tours. Visitors can learn about the town's extensive shipbuilding and maritime heritage at the Milbridge Historical Society and museum.



Steuben

Steuben's heart is the village green with its church, school, and library. The village green marks the beginning of the Bold Coast section of the Schoodic International Sculpture Symposium sculpture trail (other host towns nearby include Milbridge, Harrington, and Addison). Steuben is home to the Eagle Hill Institute, a scientific and literary organization offering professional seminars and community lectures in the natural history sciences. Enjoy a walk or paddle by kayak through the Maine Coastal Islands National Wildlife Refuge to view nesting seabirds and other wildlife, or hike the Pigeon Hill Mountain trail for great views of Petit Manan Island and Light House. Both preserves provide breathtaking views and exhilarating hikes.

Driving Tours

Bold Coast Scenic Byway
boldcoastbyway.com

Downeast Fisheries Trail
downeastfisheriestrail.org

East Coast Greenway
greenway.org/explore-by-state/me

Maine Ice Age Trail
iceagetrail.umaine.edu

Maine Wine Trail
mainewineryguild.com

Schoodic International Sculpture Trail
schoodicsculpture.org

Downeast and Acadia Birding Trail
mainebirdingtrail.com/Downeast

Visitor Resources Online

ATV Trails Information
atvmaine.org/clubs-eastern

DownEast & Acadia Regional Tourism
downeastacadia.com

Downeast Coastal Conservancy
downeastcoastalconservancy.org

Ellsworth Area Chamber of Commerce
ellsworthchamber.org

Maine Coast Heritage Trust
mcht.org/preserves

Maine Coast Islands National Wildlife Refuge
fws.gov.maine_coastal_islands

Maine Island Trail Association
mita.org

Machias Bay Area Chamber Of Commerce
machiaschamber.org

Snowmobile Trails Information
maine.gov/dacf/parks/snowmobiling/trails

Milbridge Area Merchants Association
www.milbridge.org
PO Box 536, Milbridge, ME 04658

The Great Heath, a 6,000-acre wilderness area containing the largest raised bog ecosystems in Maine, offers remote paddling and bird watching opportunities just a short drive from Cherryfield contains antique and gift shops, an old-fashioned walking tour.) (The Cherryfield Historical Society provides a downloadable

Cherryfield offers a peaceful paddle up the Narraguagus River with several pocket parks for picnicking, fishing and enjoying the meander of the water. Just outside of town are blueberry and vegetable farms, a winery, and an alpaca farm. Cherryfield offers a leisurely stroll around the Narraguagus River Days, an annual hometown celebration. Downtown general store, a B&B offering English Tea, and hosts Cherryfield contains antique and gift shops, an old-fashioned walking tour.) (The Cherryfield Historical Society provides a downloadable



Cherryfield

Milbridge was inspired by the English town of Todmorden whose residents transformed their small city into a booming market destination known as "Incredible Edible Todmorden". Now, Milbridge is transforming its own downtown into an incredible edible community where people are invited to snack on publicly planted, locally grown fruits and vegetables as they explore the town.

Milbridge Days is an enduring annual community celebration with events such as the infamous codfish relay race. Milbridge was inspired by the English town of Todmorden whose residents transformed their small city into a booming market destination known as "Incredible Edible Todmorden". Now, Milbridge is transforming its own downtown into an incredible edible community where people are invited to snack on publicly planted, locally grown fruits and vegetables as they explore the town.

Town Offices

69 Addison
334 Water St, Columbia Falls, ME 04623
207-483-4678 • addisonmaine.org

70 Cherryfield
12 Municipal Way, Cherryfield, ME 04622
207-546-2376 • cherryfieldmaine.us

71 Columbia
106 Epping Rd, Columbia, ME 04623
207-483-2365

72 Columbia Falls
205 Main St, Columbia Falls, ME 04623
207-483-4067

73 Harrington
114 E Main St, Harrington, ME 04643
207-483-2061 • harringtonmaine.com

74 Milbridge
22 School St, Milbridge, ME 04658 • 207-546-2422

75 Steuben
294 US Route 1, Steuben, ME 04680
207-546-7209 • steubenme.com

Trails

76 Birch Point Trail - Petit Manan Wildlife Refuge, Steuben

77 Down East Sunrise Trail - Steuben, Cherryfield, Columbia Falls, Columbia, Harrington
sunrisetrail.org

78 Eagle Hill Trails, Steuben
2.5 mile network

79 McClellan Park, Milbridge
(207) 546-2422 (Town of Milbridge)

80 Hollingsworth Trail - Petit Manan Wildlife Refuge, Steuben, 1.5 mile loop

81 Ingersoll Point Preserve, Addison
3.4 mile network

82 Milbridge Commons, Milbridge
whrl.org/commons

83 Pigeon Hill, Steuben
1.6 mile network

84 Stewart Park, Cherryfield
207-546-2376 (Town of Cherryfield)

85 Weald Bethel Trails - Cherryfield

86 Walking Track - Harrington

Cherryfield offers a peaceful paddle up the Narraguagus River with several pocket parks for picnicking, fishing and enjoying the meander of the water. Just outside of town are blueberry and vegetable farms, a winery, and an alpaca farm. Cherryfield offers a leisurely stroll around the Narraguagus River Days, an annual hometown celebration. Downtown general store, a B&B offering English Tea, and hosts Cherryfield contains antique and gift shops, an old-fashioned walking tour.) (The Cherryfield Historical Society provides a downloadable



Columbia

Harrington is the home of a locally-owned and -operated forest. A family-operated cranberry farm which occasionally offers tours is located on Route 1A in Harrington. Ocean-side cabins are available in several locations. Harrington is the home of a locally-owned and -operated forest. A family-operated cranberry farm which occasionally offers tours is located on Route 1A in Harrington. Ocean-side cabins are available in several locations.



Harrington

In clear, quiet lakes are just a few minutes drive out of town along the Black Woods Scenic Byway.

First settled in 1765, Harrington is a quiet coastal village with lovely old homes and a popular local eatery in the center of town. The Frank E. Woodworth Preserve trail winds through moss-covered woodlands containing trees more than a century old. The trail emerges at the shoreline overlooking the upper reaches of Pleasant Bay. Several tidal rivers converge at Ripley Neck, supporting a wide array of shorebirds and waterfowl. Harrington is the home of a locally-owned and -operated forest. A family-operated cranberry farm which occasionally offers tours is located on Route 1A in Harrington. Ocean-side cabins are available in several locations.

54 Camden National Bank
29 Main St, Milbridge, ME 04658 • 207-546-2521
camdennational.com

Cloud 9 Electric
207-638-3080 • cloud9electric.com

Handy Electric
207-598-5709

55 Jasper Wyman & Son
PO Box 100 Milbridge, ME 04658 •207-546-3800

56 K9 Kamp
271 Main St, Milbridge, ME 04658 • (207) 546-7350

57 Mark Wright Construction & Disposal
231 Route 1, Columbia, Maine 04623
207-483-4444 • mwc.d.net

Open Arms Child Care & Specialized Services
283 Sacarap Rd, Columbia Falls • 207-598-7669

59 Schoodic Insurance Services
79 Main Street, Milbridge, ME 04658
207-546-2500 • schoodicinsurance.com

Tom Hitchins Architecture
207-546-4232 • teharchitecture.com

60 Milbridge Redemption

Organizations & Groups

61 DownEast & Acadia Regional Tourism
PO Box 235 Milbridge, ME 04658 • 207-214-0588

Downeast Coastal Conservancy
6 Colonial Way, PO Box 760, Machias, Maine 04654 • 207-255-4500
downeastcoastalconservancy.org

Gateway Milbridge
Milbridge, ME • gatewaymilbridge.org

62 Sunrise County Arts Institute, Inc.
P.O. Box 277, Milbridge, ME 04658
207-546-2272 • sunrisecountyarts.org

Sunrise County Economic Council
53 Prescott Drive, Suite 3, Machias, Maine 04654
207-255-0983 • sunrisecounty.org/

63 Women's Health Resource Library
PO Box 463, 24 School Street, Milbridge, ME 04658 207-546-7677 • whrl.org

64 Mano en Mano

Public Libraries

65 Henry D. Moore Parish House & Library
22 Village Road, Steuben, ME 04680
207-546-7301 • moorelibrary.org

66 Cherryfield Public Library

67 Gallison Memorial Library

68 Milbridge Library

South Addison is the starting point for exploration of Tibbett Island, a 23-acre island just 600 feet offshore. Ingersoll Point Preserve has 145 forested acres with over 3 miles of trails on Carrying Place Cove and Woha Bay. South Addison's Cape Split was the beloved summer home of artist John Marin.

South Addison is the starting point for exploration of Tibbett Island, a 23-acre island just 600 feet offshore. Ingersoll Point Preserve has 145 forested acres with over 3 miles of trails on Carrying Place Cove and Woha Bay. South Addison's Cape Split was the beloved summer home of artist John Marin.

South Addison is the starting point for exploration of Tibbett Island, a 23-acre island just 600 feet offshore. Ingersoll Point Preserve has 145 forested acres with over 3 miles of trails on Carrying Place Cove and Woha Bay. South Addison's Cape Split was the beloved summer home of artist John Marin.



Addison and South Addison

South Addison is the starting point for exploration of Tibbett Island, a 23-acre island just 600 feet offshore. Ingersoll Point Preserve has 145 forested acres with over 3 miles of trails on Carrying Place Cove and Woha Bay. South Addison's Cape Split was the beloved summer home of artist John Marin.



Columbia Falls

Columbia Falls village, a short loop off of Route 1, contains many historic homes in its walkable village, including the Historic Ruggles House Museum, which showcases Federal Design and Adam Ornament (including a flying staircase and original furniture). The Wreaths Across America Museum

Information Centers

- Schooner Gallery and Information Center
- Wildlife Refuge

Attractions

3 Downeast Coastal Cruises
Bay View Street, Milbridge • 207-598-7740 or
207-546-7720 • downeastcoastalcruises.com

4 Milbridge Historical Society & Museum
83 Main St, Milbridge, Maine 04658
207-546-4471 • milbridgehistoricalsociety.org

5 Robertson Sea Tours & Adventures
Departing Milbridge Marina • 207-461-7439 or
207-483-6110 • robertsonseatours.com

6 Ruggles House
146 Main Street, Columbia Falls, ME 04623
207-483-4637 • ruggleshouse.org

7 Balsam Valley Amphitheatre

8 Cherryfield Narraguagus Historical Society

9 Downeast Salmon Fed. Pleasant River Hatchery

10 Wreaths Across America

Dining

11 Milbridge House
20 Main Street, Milbridge, Maine 04658
207-546-4454 • milbridgehouse.com

12 44 Degrees North Restaurant & Pub
17 Main Street, Milbridge, ME 04658
207-546-4440 • 44-degrees-north.com

13 Vazquez Mexican Takeout
38 Main Street, Milbridge, ME 04658
207-546-2219 • facebook.com/vazquezmex

14 American Pie

15 Deano's Takeout

16 Group Therapy Restaurant / Grammys Donuts

17 North Street Cafe

18 Pleasant River Drive-in

19 Scovils Millside Dining

20 Uncle Skinny's Takeout

Lodging

21 Englishman's B and B
122 Main Street, Cherryfield, ME 04622
207-546-2337 • englishmansbandb.com

22 Sunset Point Campground
24 Sunset Point Road Harrington, ME 04643
207-483-4412 • sunsetpointcampground.com

23 Ocean Spray Cottages
71 Linc Point Road, Harrington, ME 04643
207-483-2780 • oceanspraycastles.com

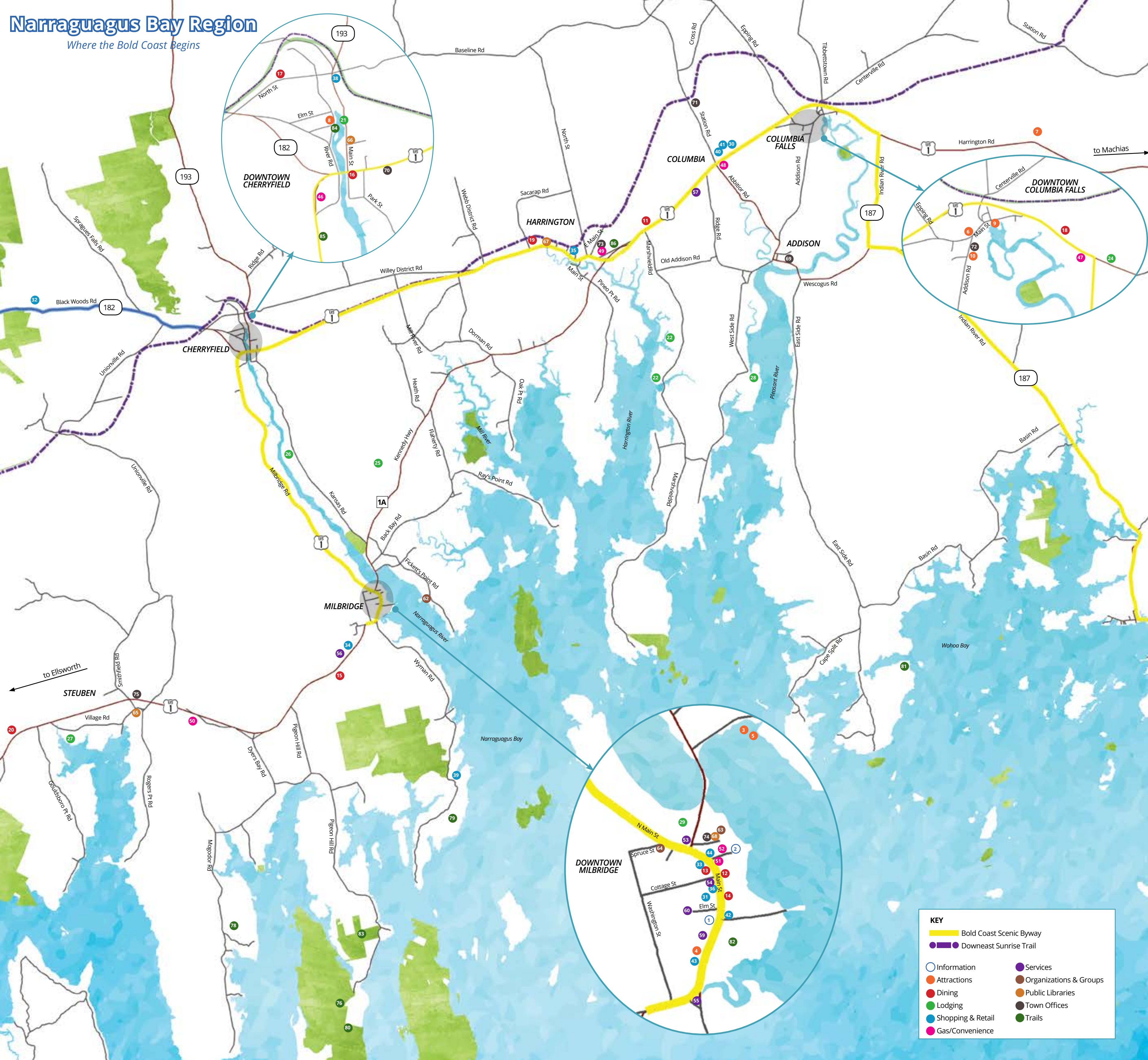
24 Cottonwood Campground

25 Coyote Creek Camping

26 Guagus River Inn

Narraguagus Bay Region

Where the Bold Coast Begins



KEY

- Bold Coast Scenic Byway
- Downeast Sunrise Trail
- Information
- Attractions
- Dining
- Lodging
- Shopping & Retail
- Gas/Convenience
- Services
- Organizations & Groups
- Public Libraries
- Town Offices
- Trails